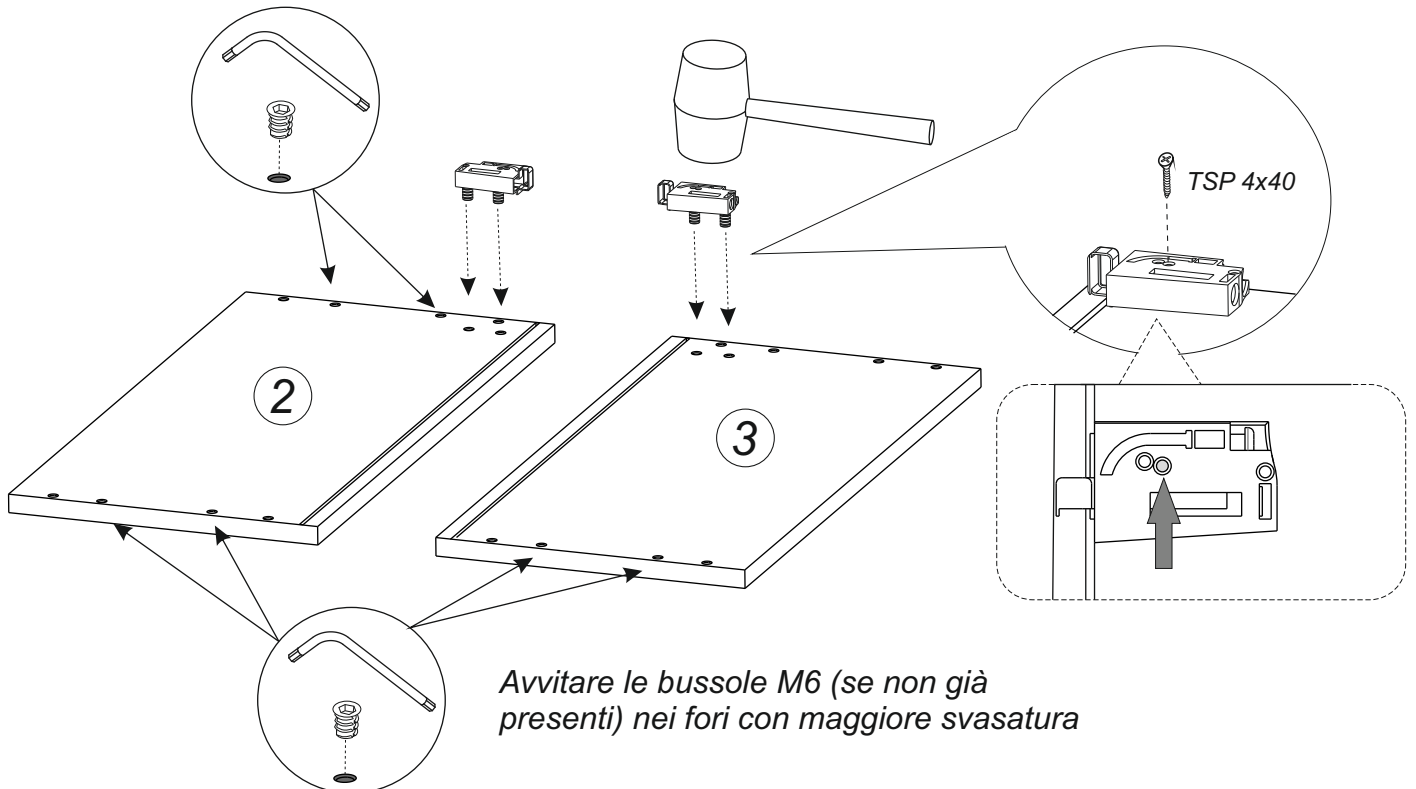
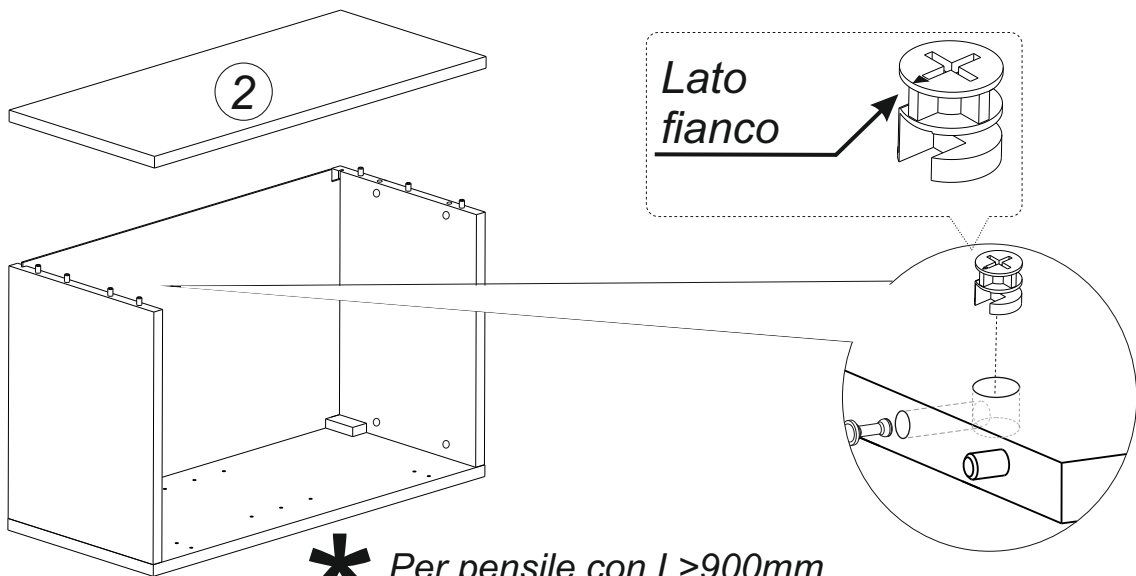
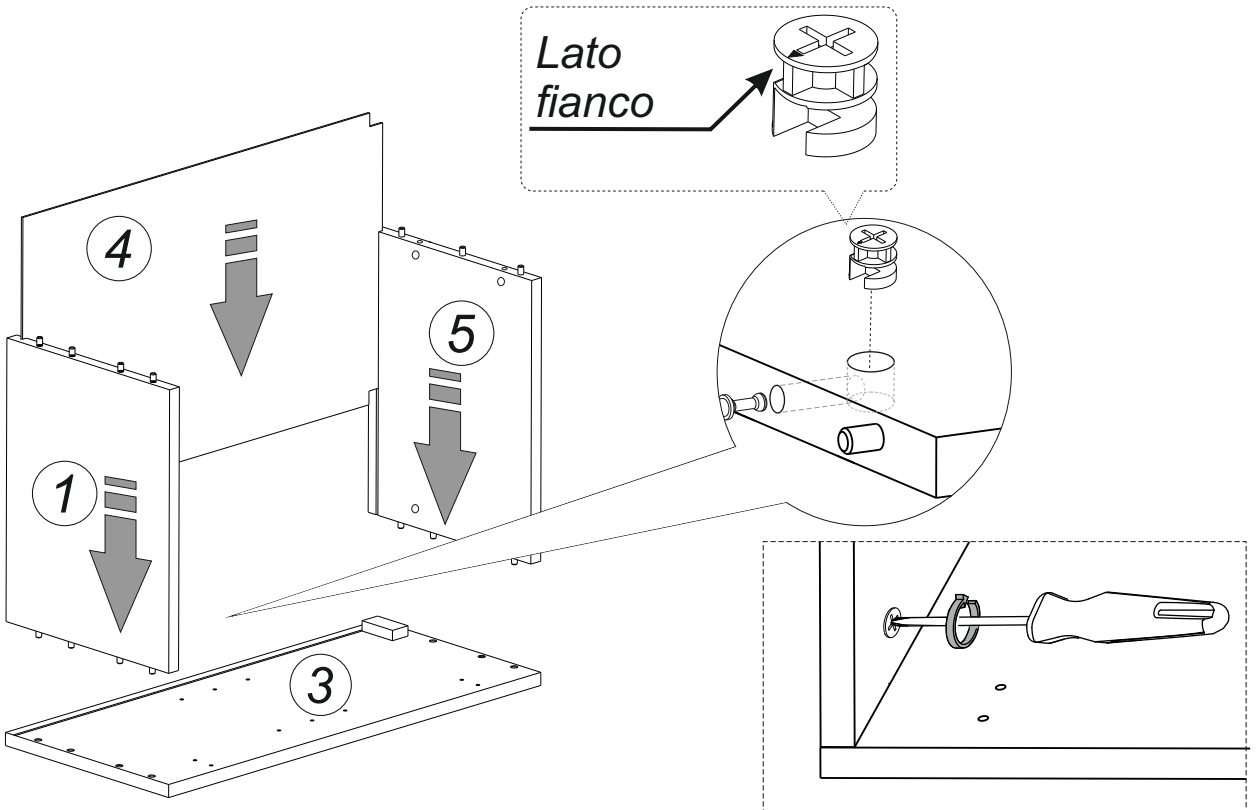
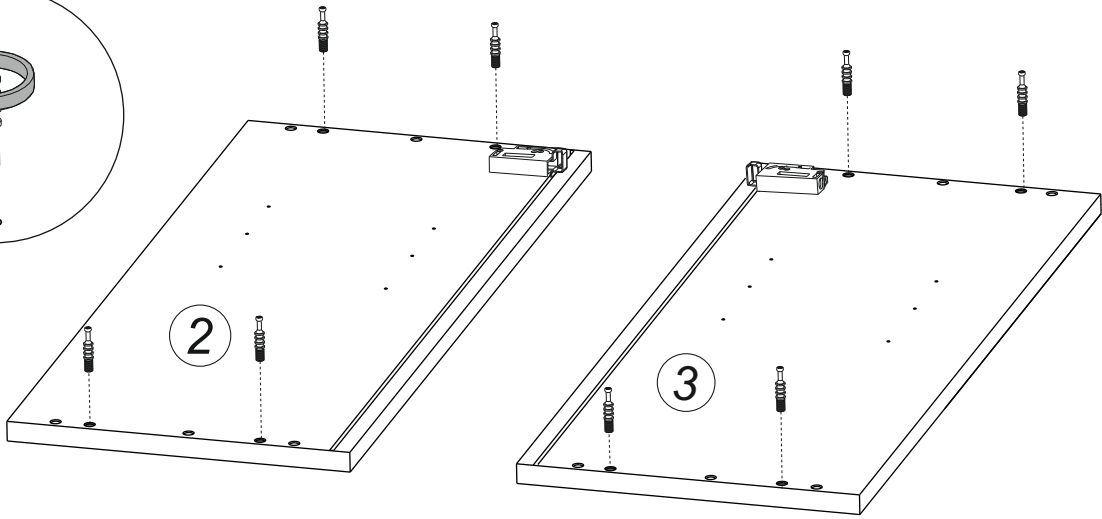
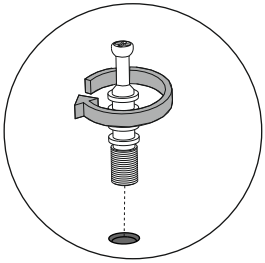


- 1 FONDO
- 2 FIANCO SINISTRO
- 3 FIANCO DESTRO
- 4 SCHIENA
- 5 COPERCHIO
- 6 RIPIANO
- 7 ANTA SUPERIORE
- 8 ANTA INFERIORE

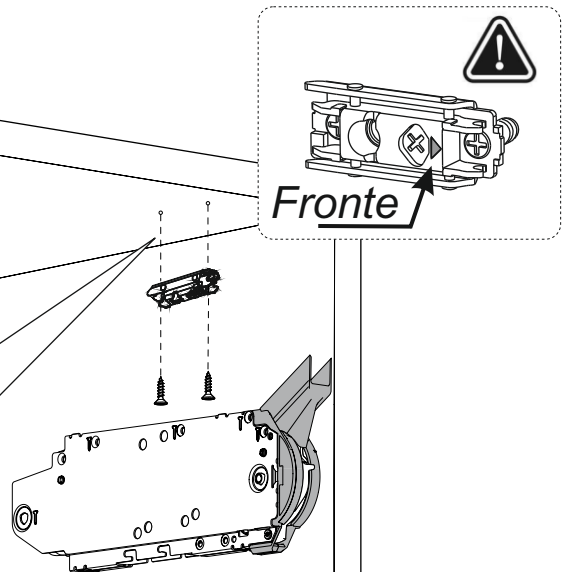
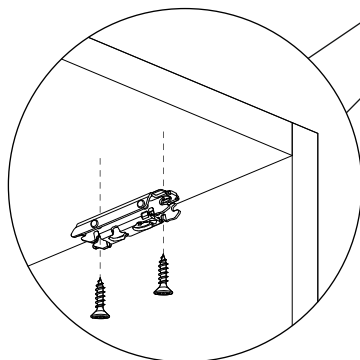
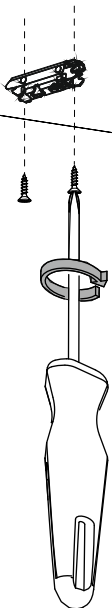
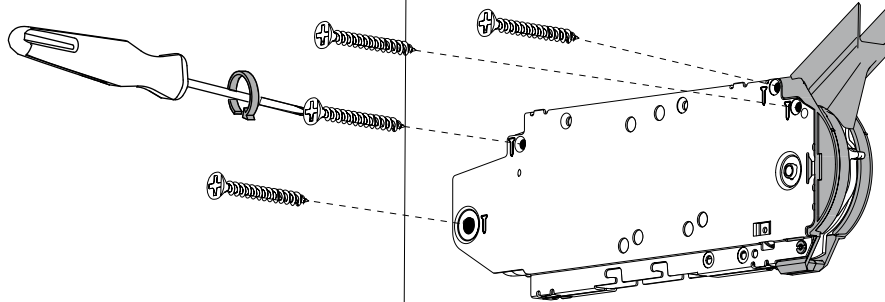
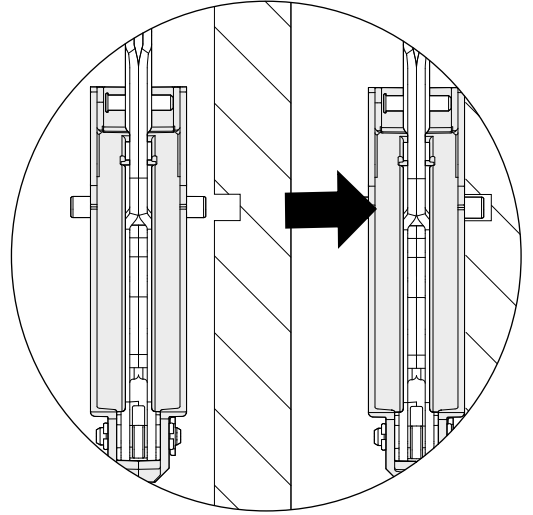
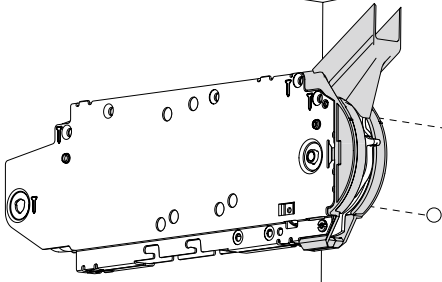
ASSEMBLAGGIO

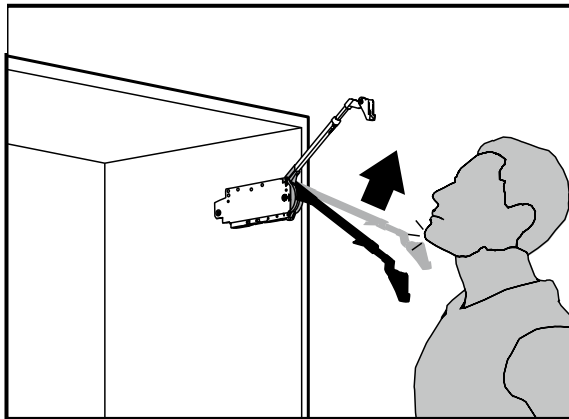
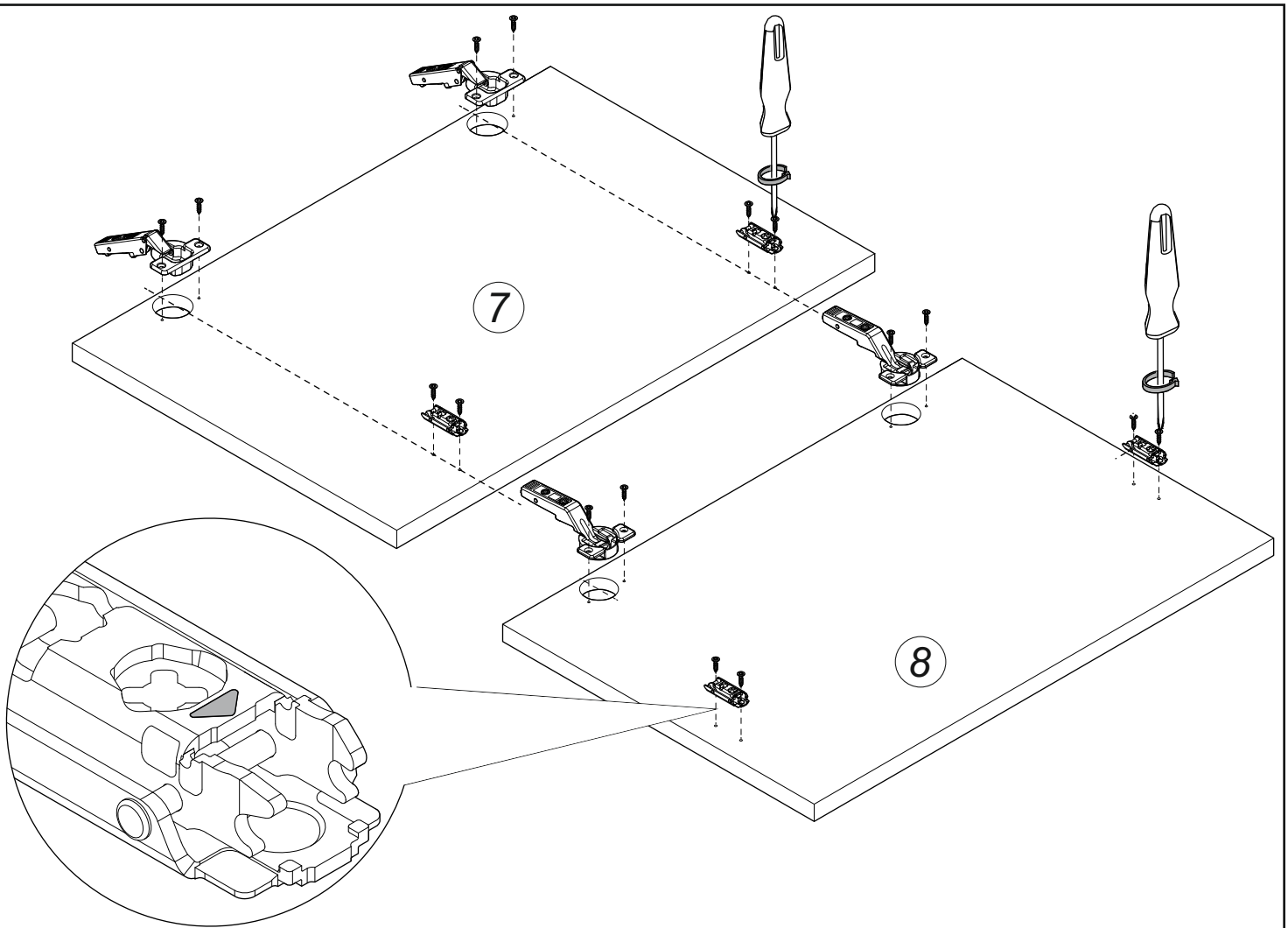


Avvitare le bussole M6 (se non già presenti) nei fori con maggiore svasatura

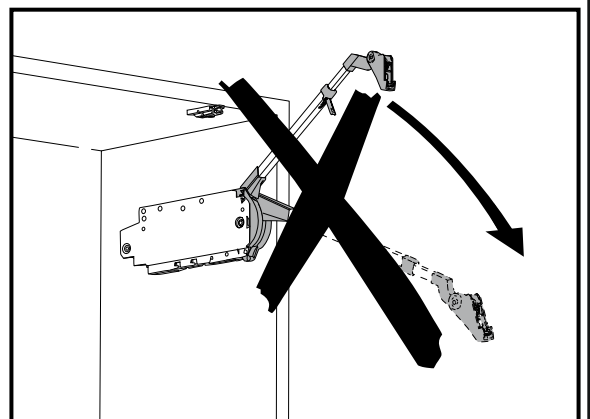


***** Per pensile con $L > 900\text{mm}$
vedere fondo pagina 6

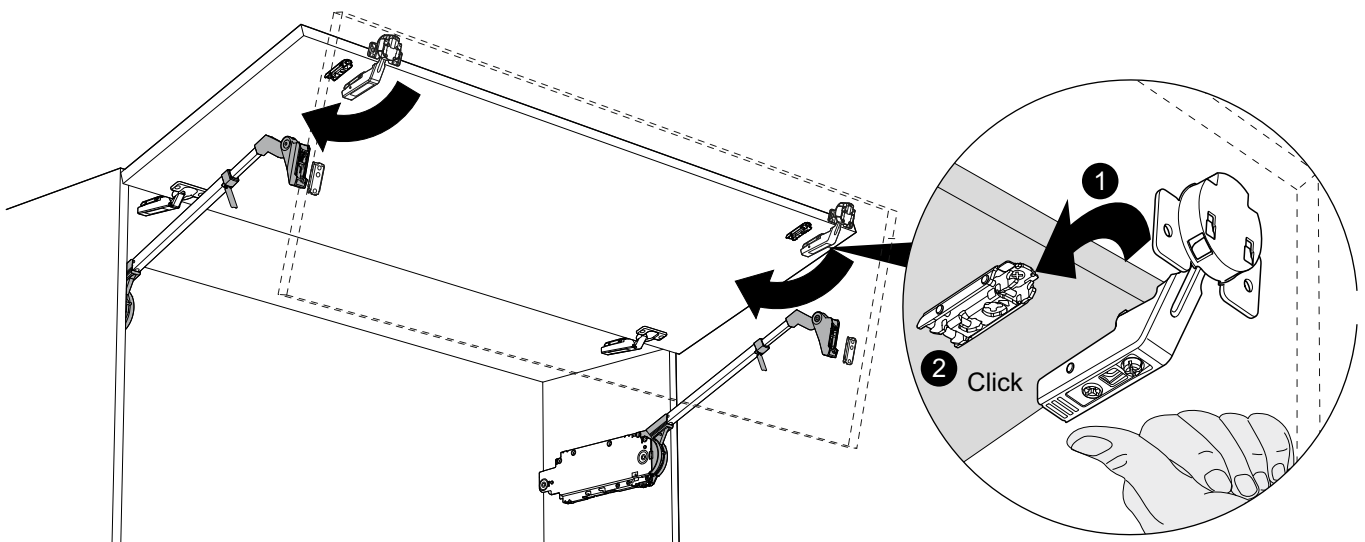
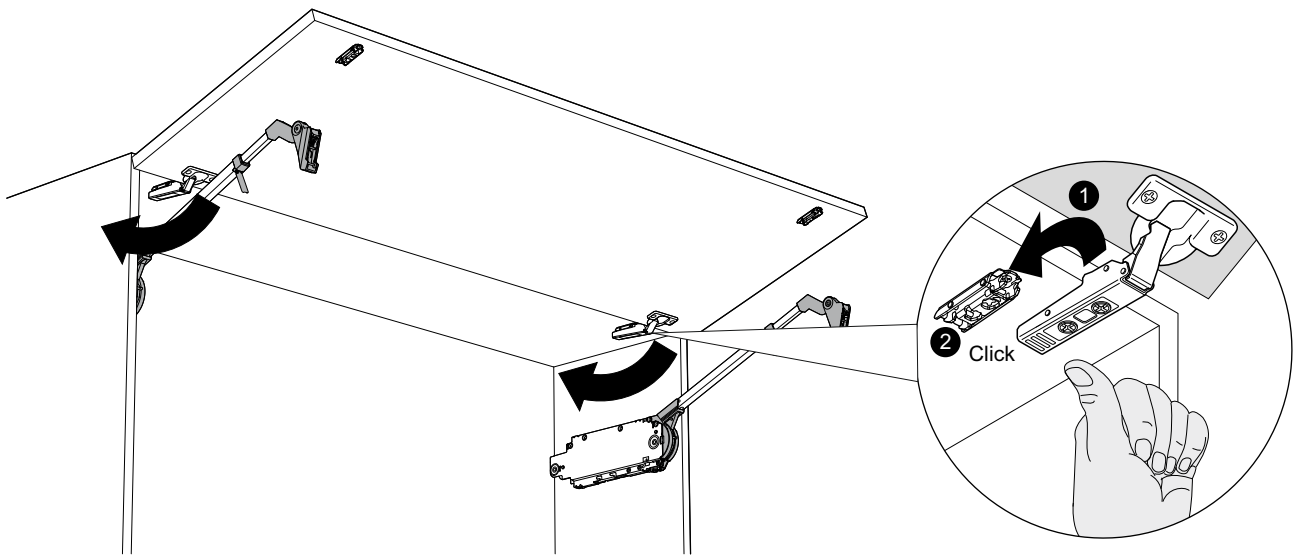
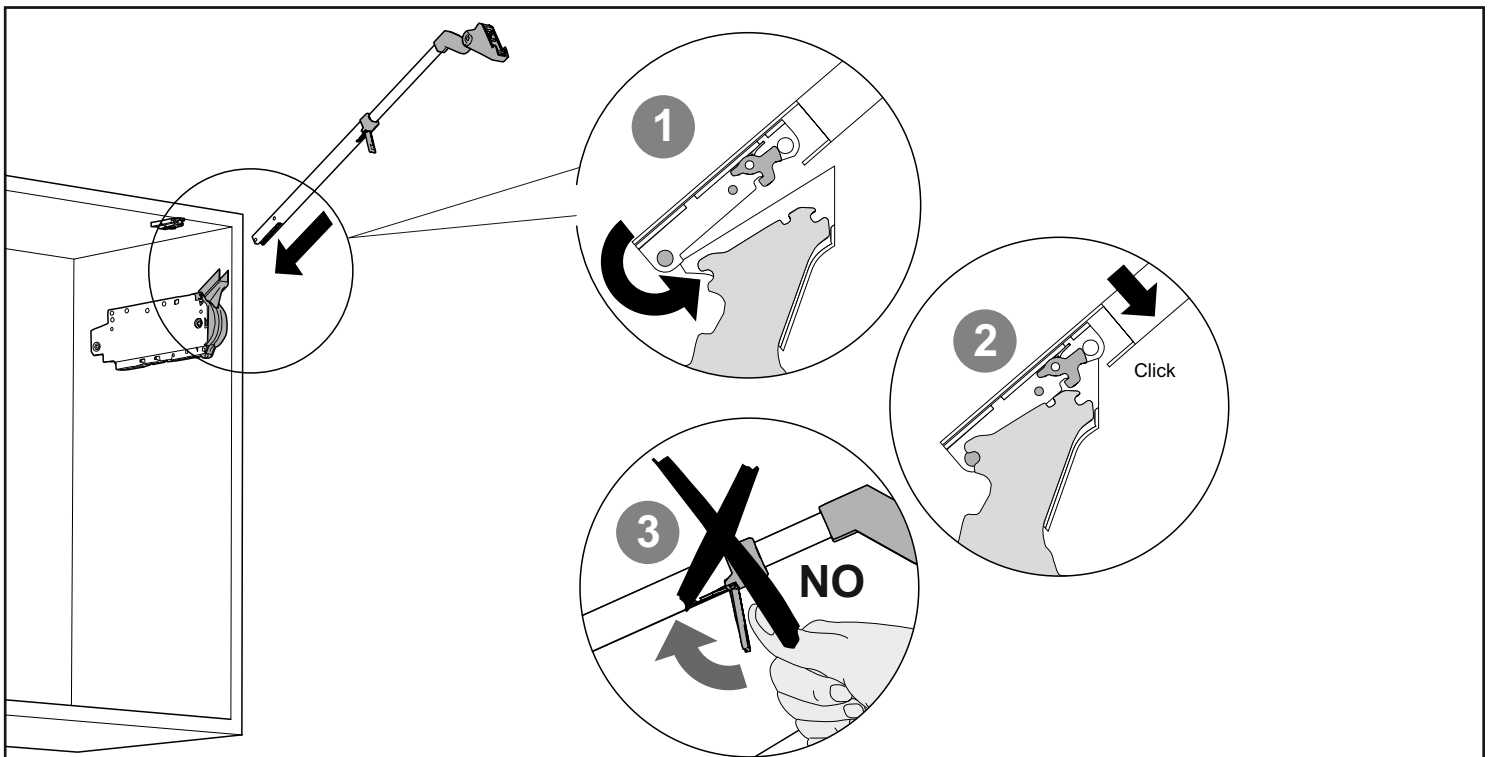


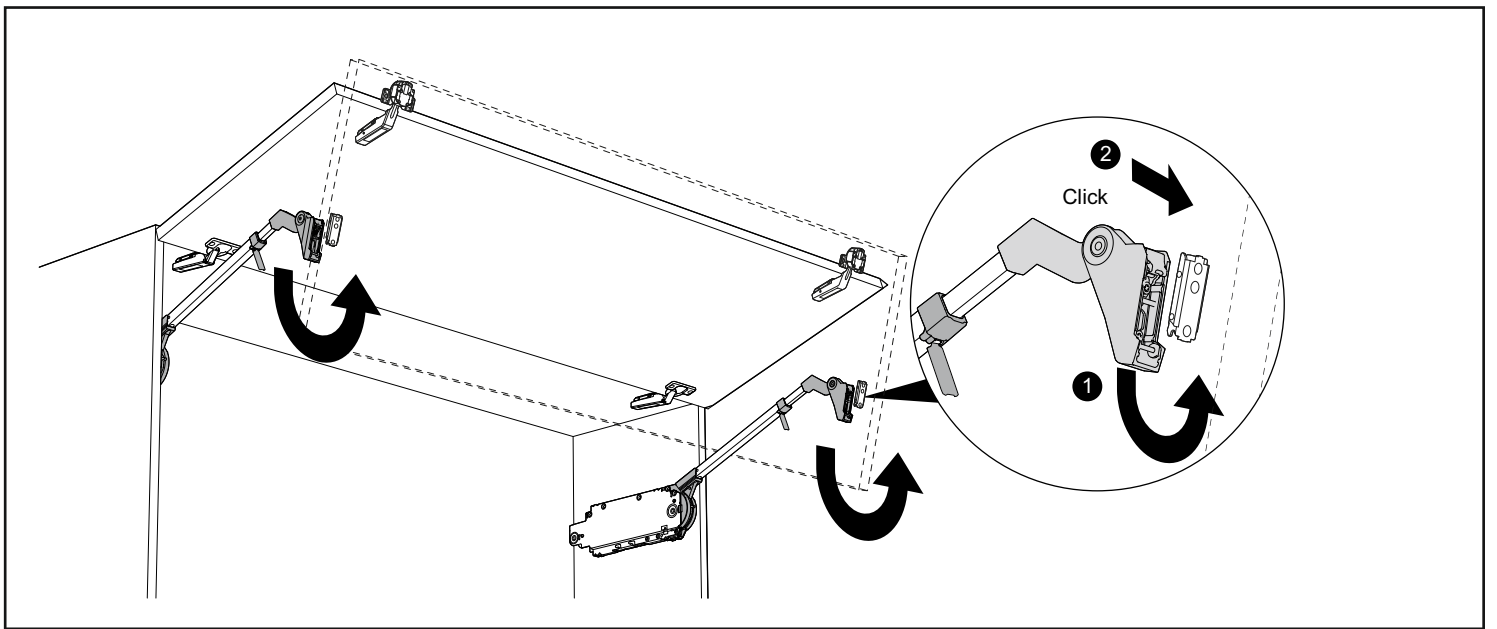


Pericolo di lesioni a causa del possibile scatto della leva verso l'alto !

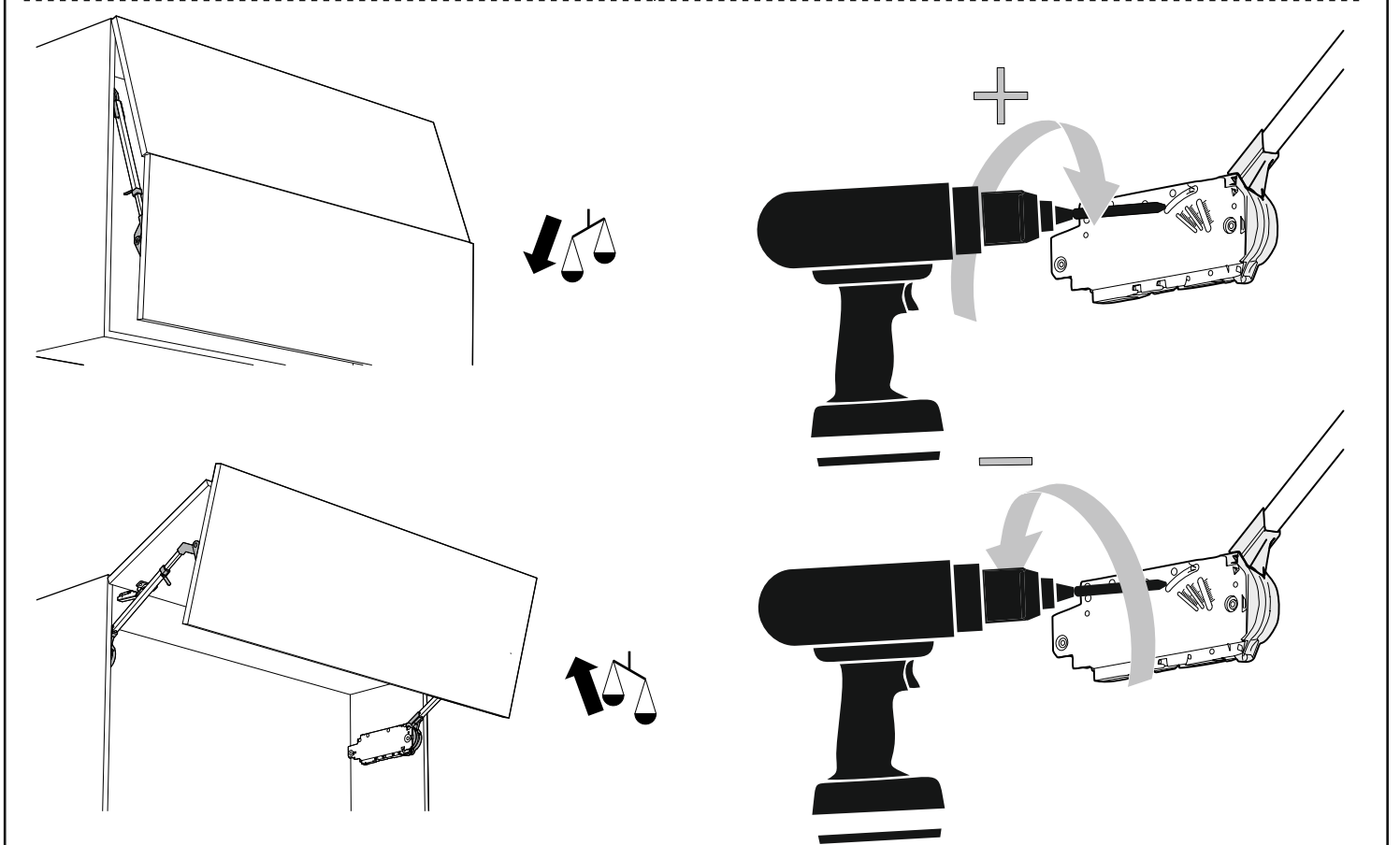
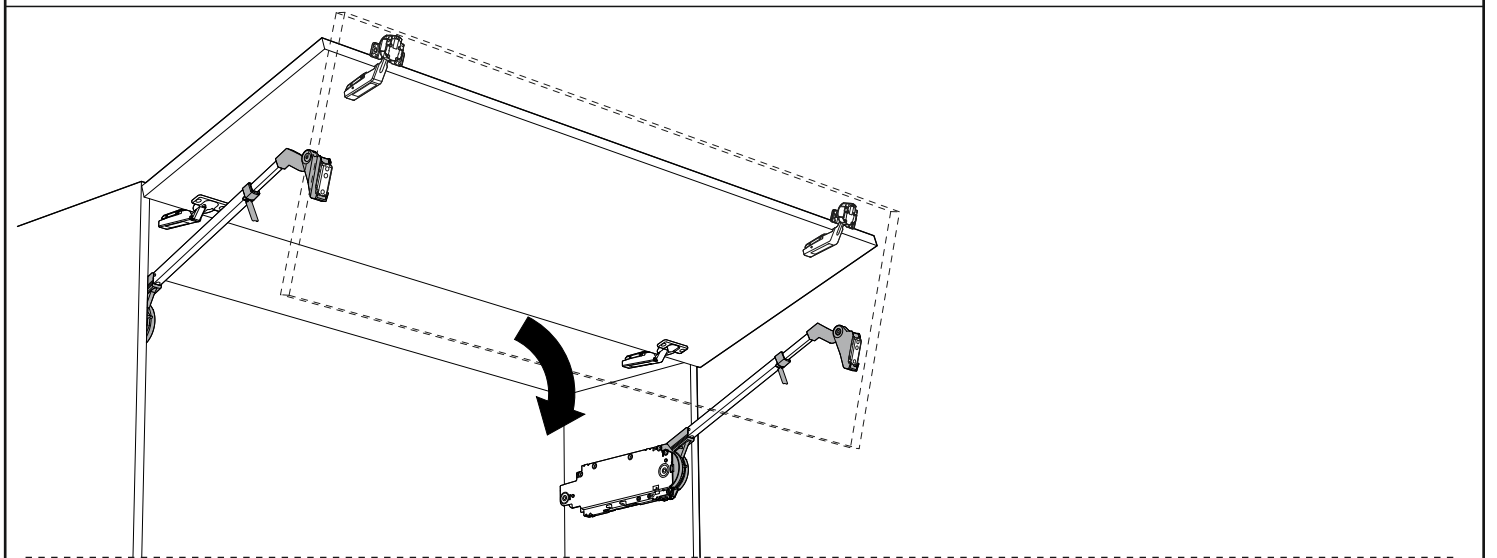


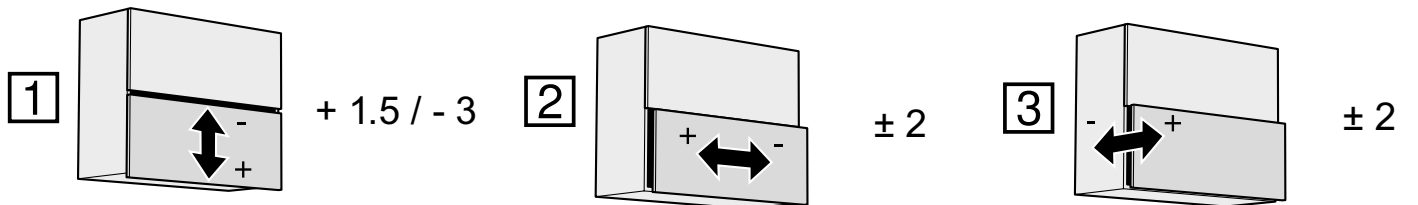
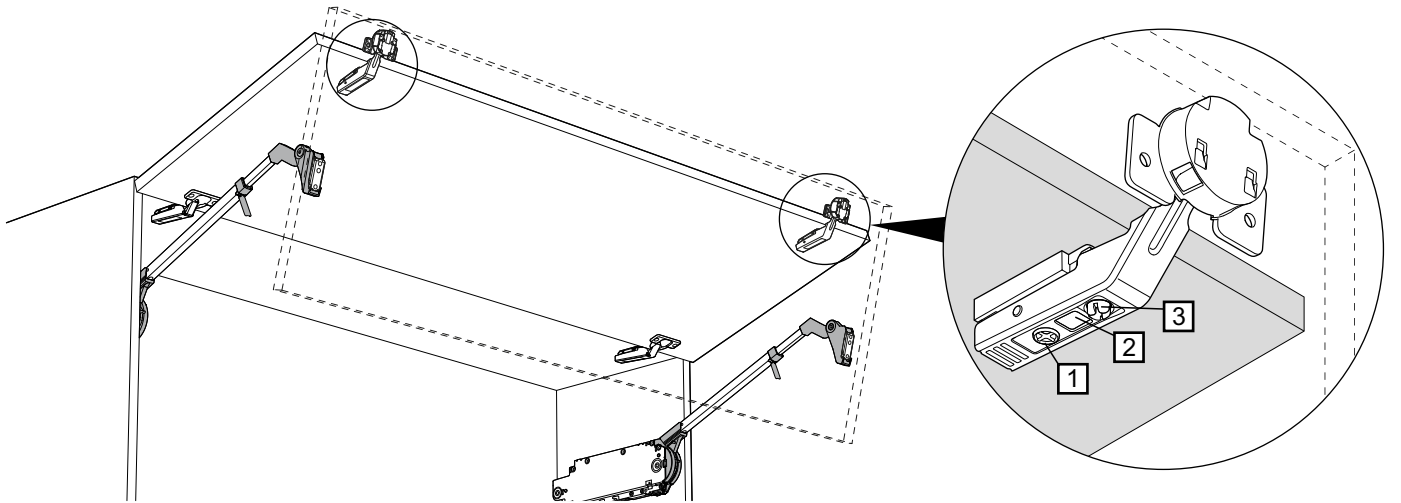
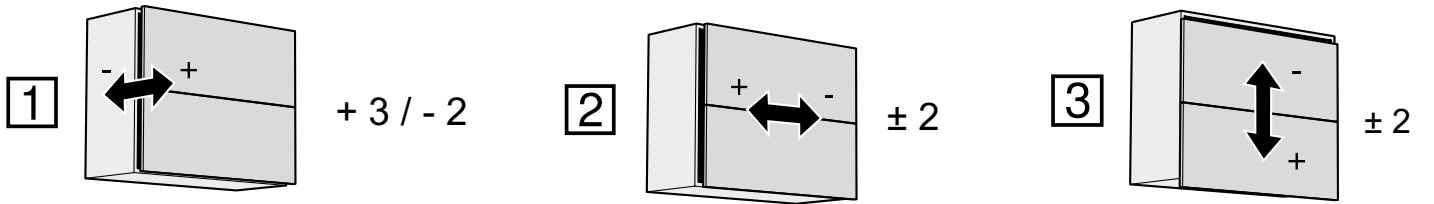
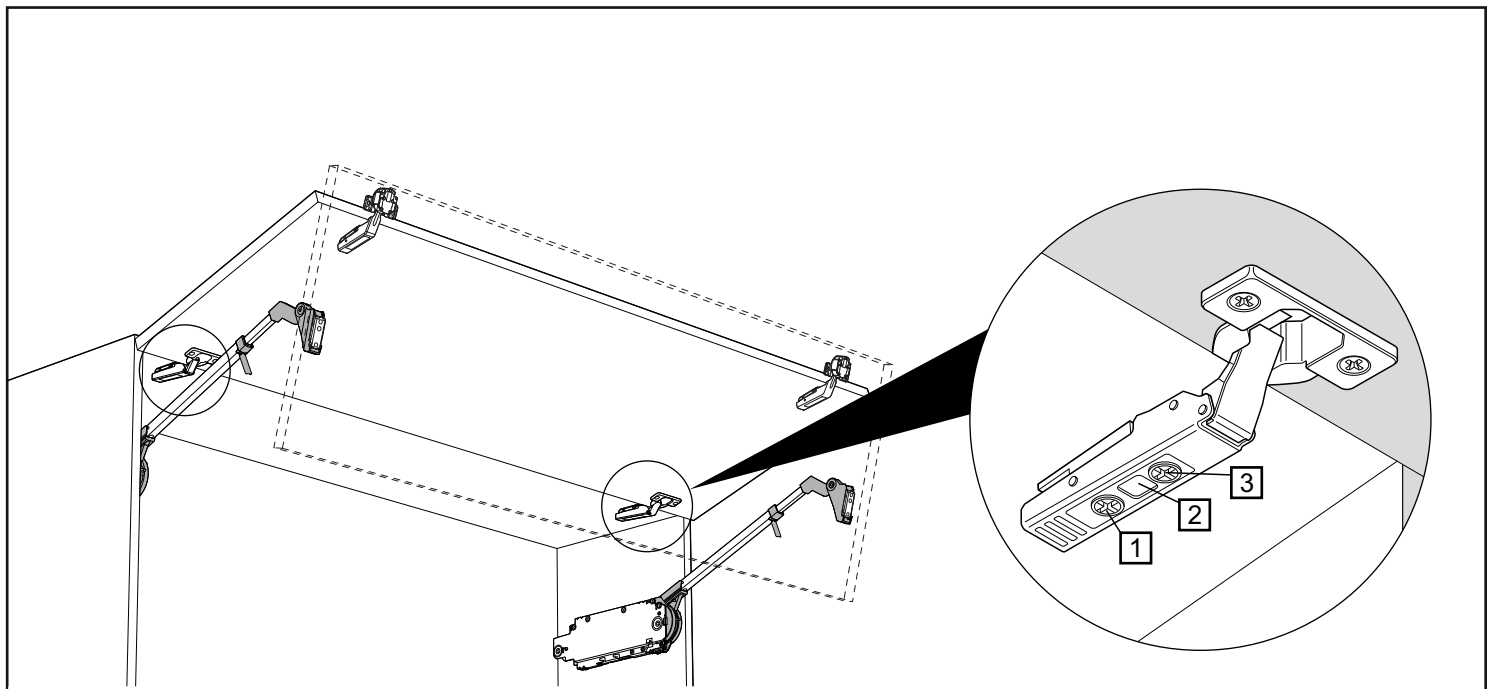
Non spingere la leva verso il basso dopo averla sollevata

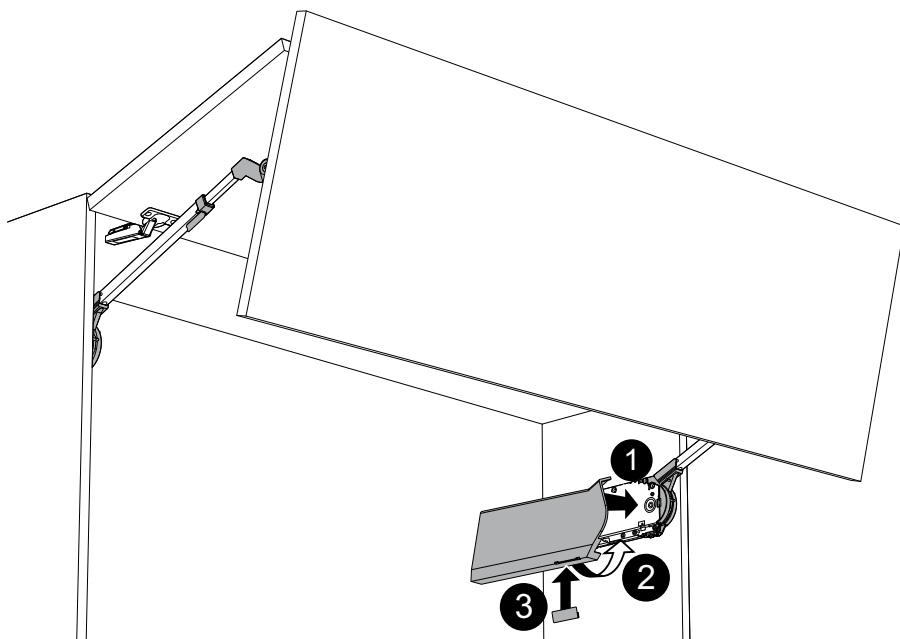
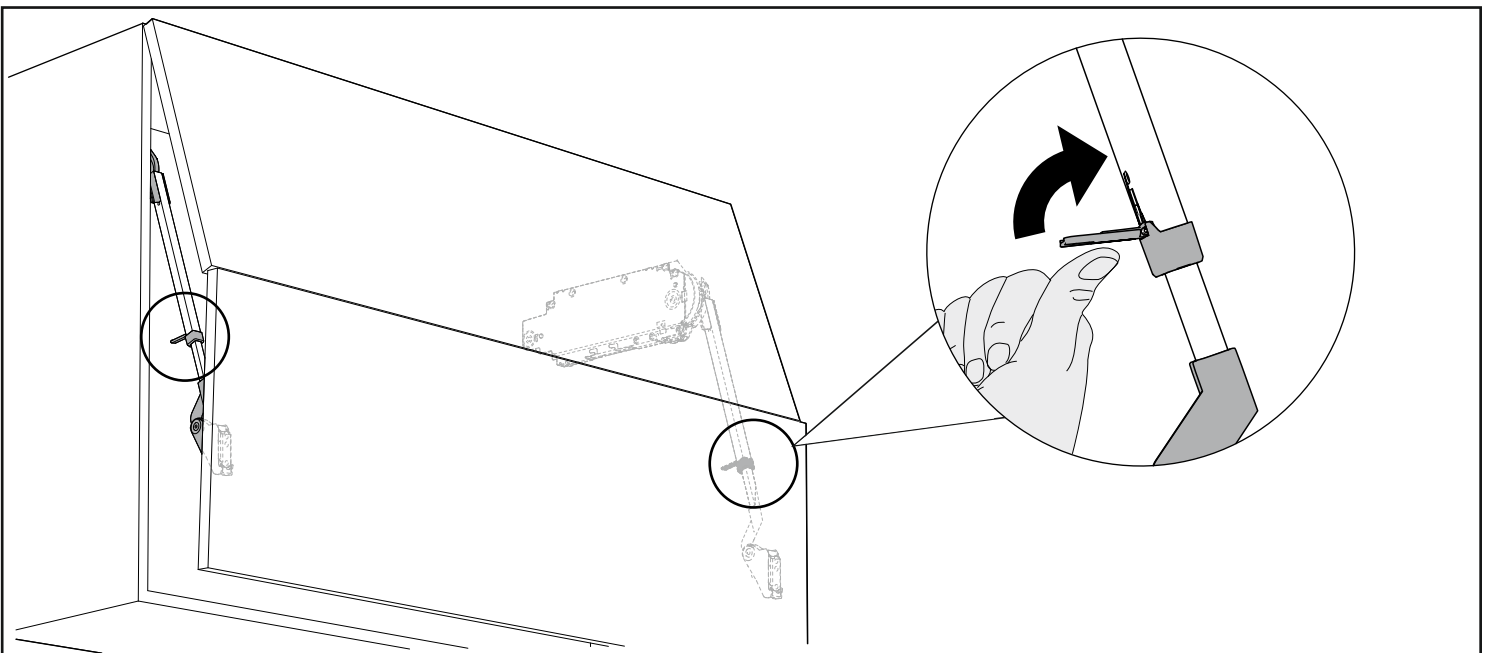




REGOLAZIONI







***** *Per pensile con $L > 900\text{mm}$ inserire la barra di supporto sul retro dello scocca e la barra antiflessione per il ripiano prima di assemblare le ante*

